

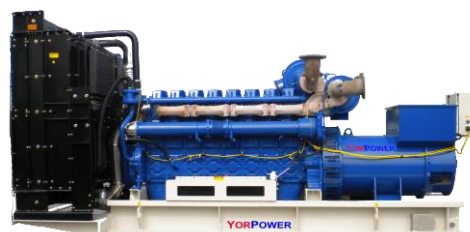
Genset
Model:

YXP2250RSC

Enclosed set



Open set



Frequency

50Hz

Phases

3

Power Factor

0.8

Prime Output

2250 kVA / 1800 kW

Standby Output

2475 kVA / 1980 kW

Ratings

- Prime output: This rating is applicable for supplying continuous electrical power at variable load. There is no limitation to the annual hours of operation and this model can supply 10% overload power for 1 hour in 12 hours.
- Standby output: This rating is applicable for supplying electrical power (at variable load) in the event of a utility power failure. No overload is permitted on these ratings.
- Standard reference conditions: 25°C, 100m A.S.L., 30% relative humidity

Design features

- High quality assembly, providing stiffness and low vibration
- Power coated steel. Corrosion and scratch resistant.
- Compact and long service life
- Wiring and connectors with double protection.
- Protection guards in radiator and high voltage parts.
- Full 12 month YorPower warranty

Design Standards

- CE marking
- ISO8528-1995
- GB/T2820-1997
- ISO 9001:2008 Registered Company

Configuration

- 4-Stroke water-cooled diesel engine.
- Industrial silencer.
- Coolant recovery tank
- Single bearing, 4 pole brushless alternator.
- Anti vibration mountings
- Integral fuel tank with fully banded base protection.
- Fuel level sensor
- Auto start control system with electronic digital control module DSE7420
- Output circuit breaker.
- Emergency stop button
- High engine temperature and low oil pressure shutdown system.
- 24V starter battery with leads and switch

Acoustic canopy features

- Water and dust proof design
- Door locks
- High quality sound absorbing and fire retardant inner material
- Lifting lugs
- Forklift holes in base

** The images above are for illustration purposes only.

Engine data

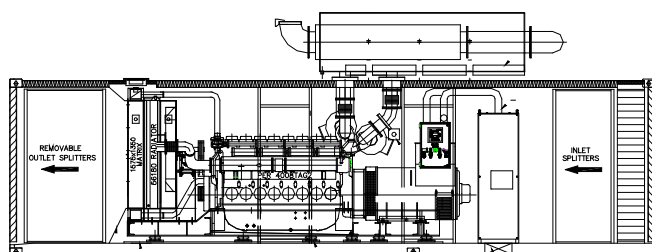
Engine brand	Perkins	Total coolant capacity	260 Litres
Engine model	4016-61TRG3	Total lube oil capacity	237.2 Litres
Engine speed	1500 RPM	Cooling air flow	TBC
Number of cylinders	16	Exhaust gas flow	TBC
Aspiration	Turbocharged	Exhaust gas temperature	TBC
Combustion system	Direct injection	Fuel cons. @ 110% standby load	529 l/hr
Displacement	61.123 Litres	Fuel cons. @ 100% Prime load	470 l/hr
Governor type	Electronic	Fuel cons. @ 75% Prime load	344 l/hr
Cooling system	Water Cooled	Fuel cons. @ 50% Prime load	234 l/hr

Alternator data

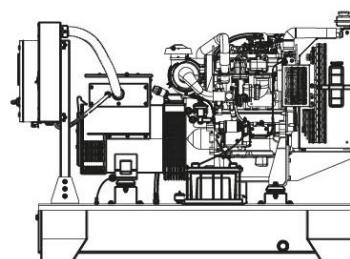
Alternator brand	Leroy Somer	Number of wires	6
Alternator model	LSA52.3L9	AVR model	R 449
Excitation	AREP or PMG	Voltage regulation	± 0.5%
Insulation class	H	Total Harmonic distortion	< 3.5%
Drip proof protection	IP23	Telephone interference	TIF < 50%, FHT < 2%
Winding pitch	2/3 (N° 6S)	Flanges and shield	Cast Iron

Enclosed set data

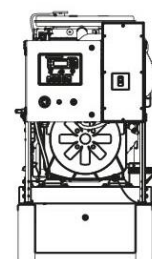
Open set data



L x W x H (mm)	Weight	Fuel tank	Noise@7M
12192 x 2438 x 3159	24,088 kg	2000 Litres	TBC



L x W x H (mm)	Weight	Fuel tank	Noise@7M
6010 x 2140 x 2561	13750 kg	N/A	118



** Due to constant innovation, design and specifications are subject to change without notice.